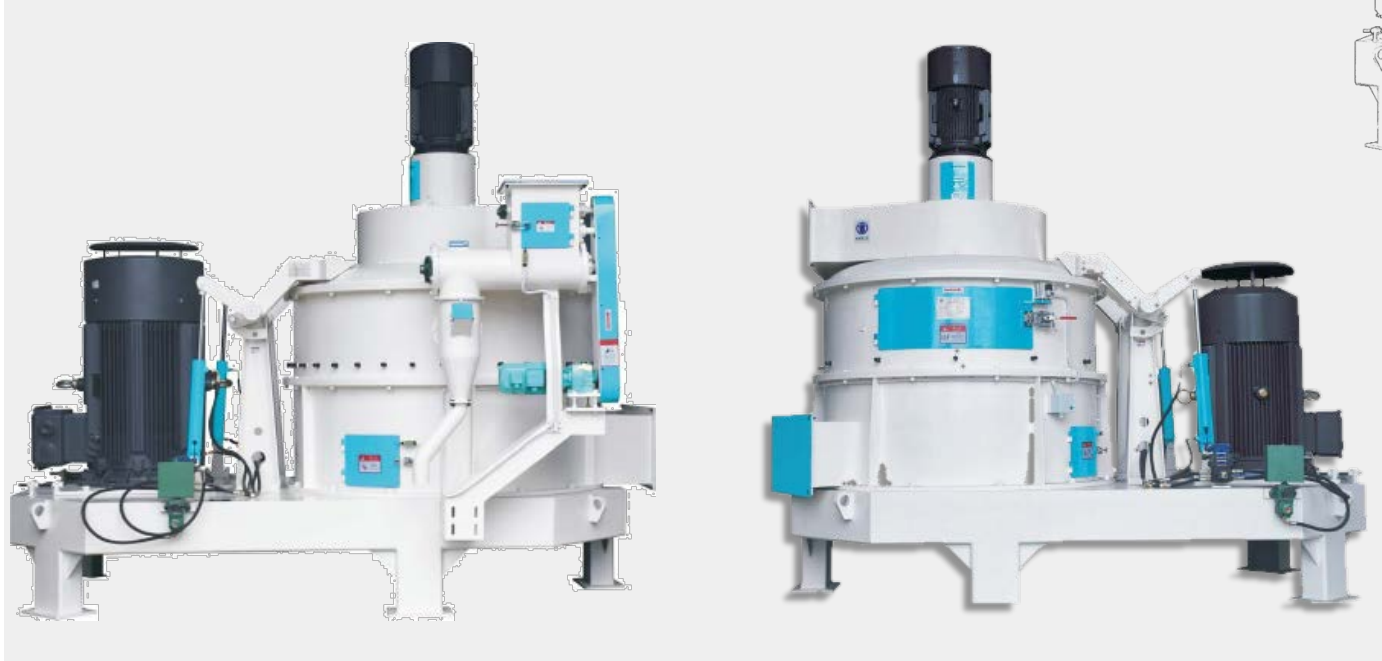
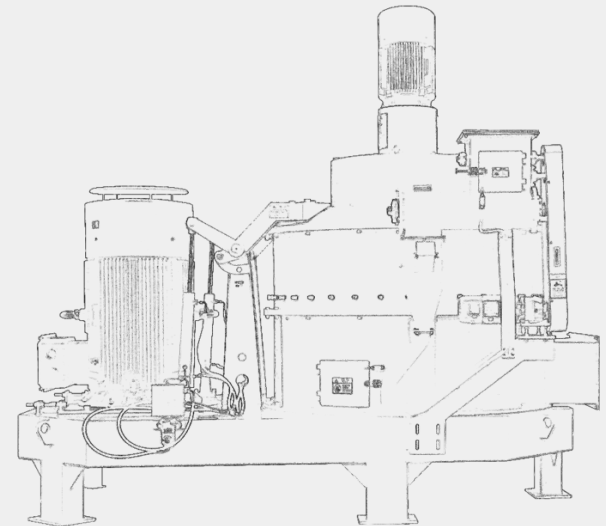


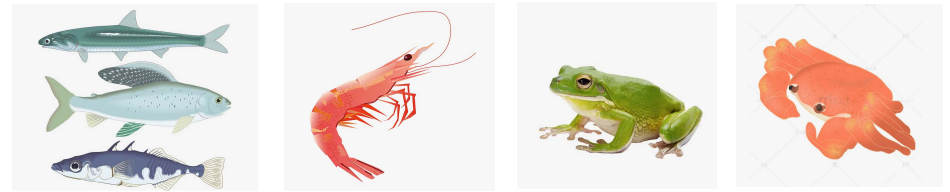


SUFP Series

Fine Pulverizing Machine



We reserve the right to make technical changes without prior announcement. All rights reserved.
 ©2020 HENAN SINOVO MACHINERY ENGINEERING CO., LTD.



WWW.SIMECPELLET.COM



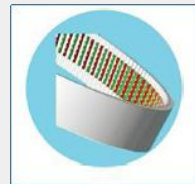
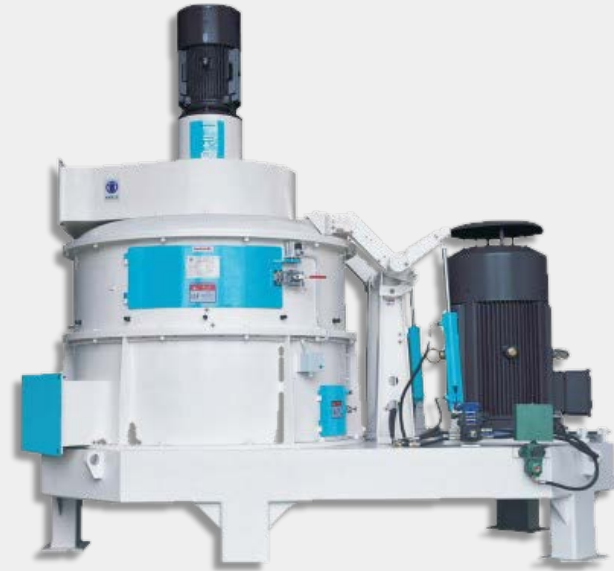
FINE PULVERIZING MACHINE



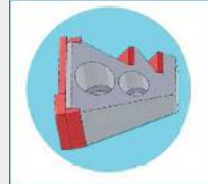
Moisture Loss < 1.5% Pulverizing Fineness 60-200. Adjustable Power consumption < 20kw/t

SUFP Series

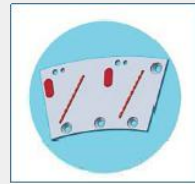
Applicable to the ultra fine pulverizing processing of various feed raw materials, such as the ultrafine grinding of shrimp feed, fish feed and other aquatic feed(60-200meshes).



Patented Sheared Toothed Gear Plate



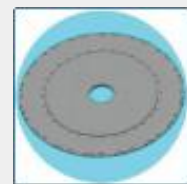
Patented Guiding Toothed Hammer



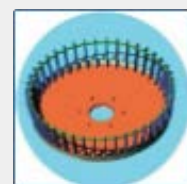
Patented Mosaic Alloy Wear Plate



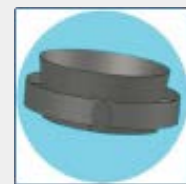
Patent Gravity Impurities Removal Device



Mosaic Alloy Pulverizing Disc



Grading Impeller



Airflow Guiding Ring

◆ The vertical shaft pulverizing structure without sieve enables the materials to be pulverized, sifted and separated in the same closed space. It can save energy while its production capacity is 30-50% higher than congeneric equipment;

◆ Pulverizing fineness:60-200 meshes, continuous and adjustable; Low temperature rise of pulverized material; Uniform particle size.

◆ Pulverizing plate and grading impeller drive separately and materials are graded by air flow.

◆ Patented guiding toothed hammer and patented sheared gear ring can enhance the shear and rolling force, break the circulation layer and improve the crushing efficiency.

◆ Patented mosaic alloy wear plate can make the position of alloy reasonable and lengthen the service life of accessories.

◆ Patented air classification gravity device can remove imperities 99.9% with specially designed feeding broken arch device.

◆ Hydraulic opening device makes sure the upper lid can be easily opened to do inspection and maintenance.

SpERICIFATION

SUFP Series				
Model	SUFP 110	SDE 130	SDE 150	SDE 170
Roter Diameter (mm)	1100	1300	1500	1700
Main Motor Power (KW)	110	132	160	220
Grading Power(KW)	11	15	18.5	18.5
Feeding Power (KW)	1.5	1.5	1.5	1.5
Capacity (t/h)	3.5~4.5	5~7	6~12	8~15

Used Cases based on SUFP150 model				
Feed Type	White Shrimp Feed	Grass Carp Feed	Weever Feed	Common Carp Feed
Main Motor Power (KW)	160	160	160	160
Feeding Frequency (HZ)	36	36	37	50
Main Motor Current (Ah)	302-313	280-288	258-274	279-285
Pulverizing Finess (80 mesh)	96.1% pass	82.0% pass	96.0% pass	80.7% pass
Capacity (t/h)	7.67	8.89	8.10	7.99

Success Cases

